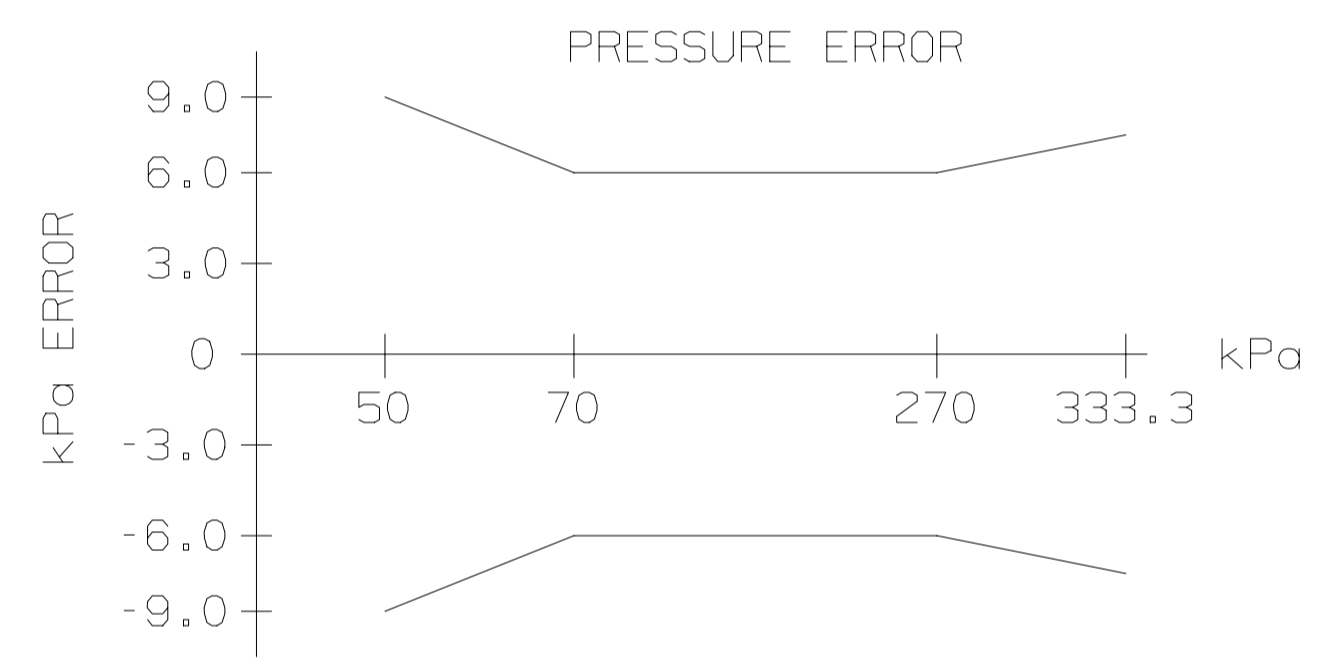
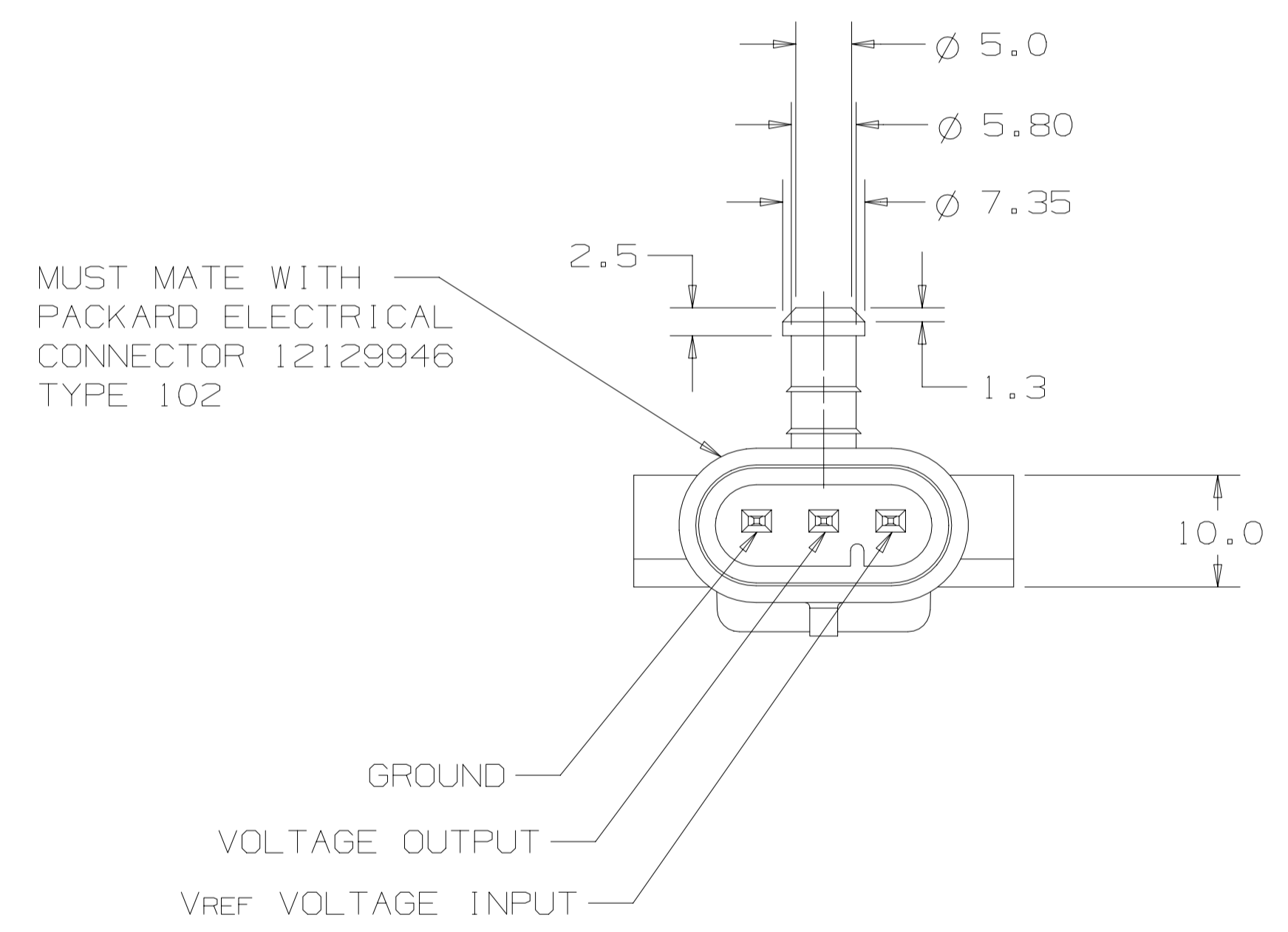
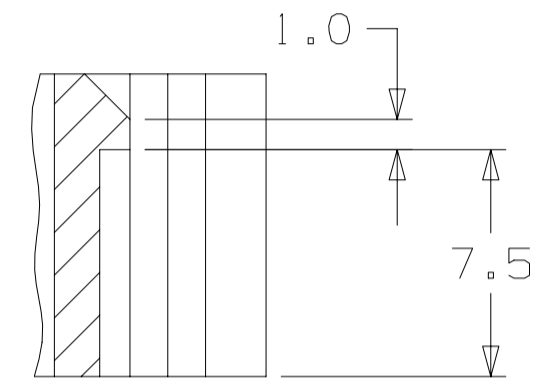
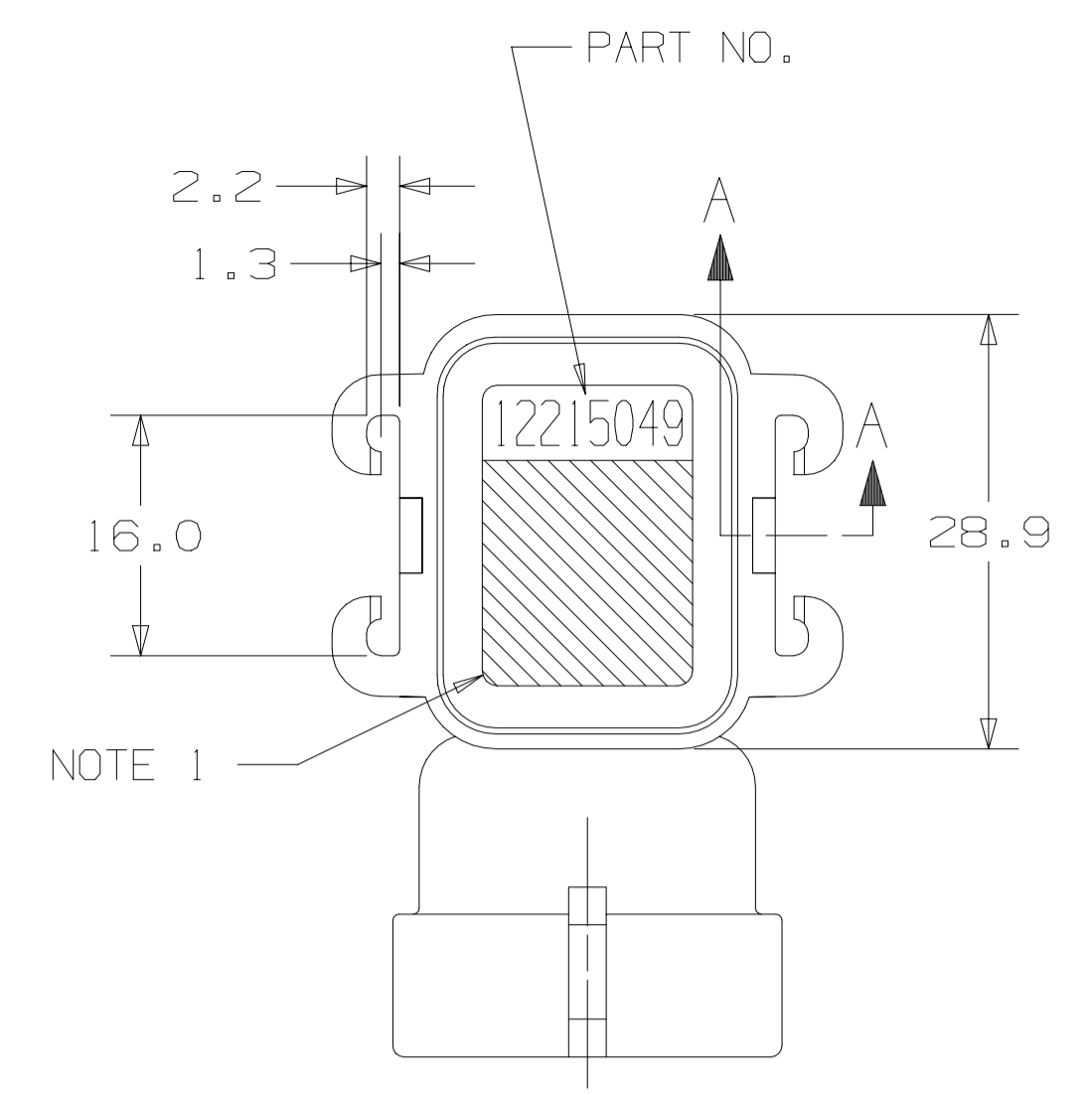
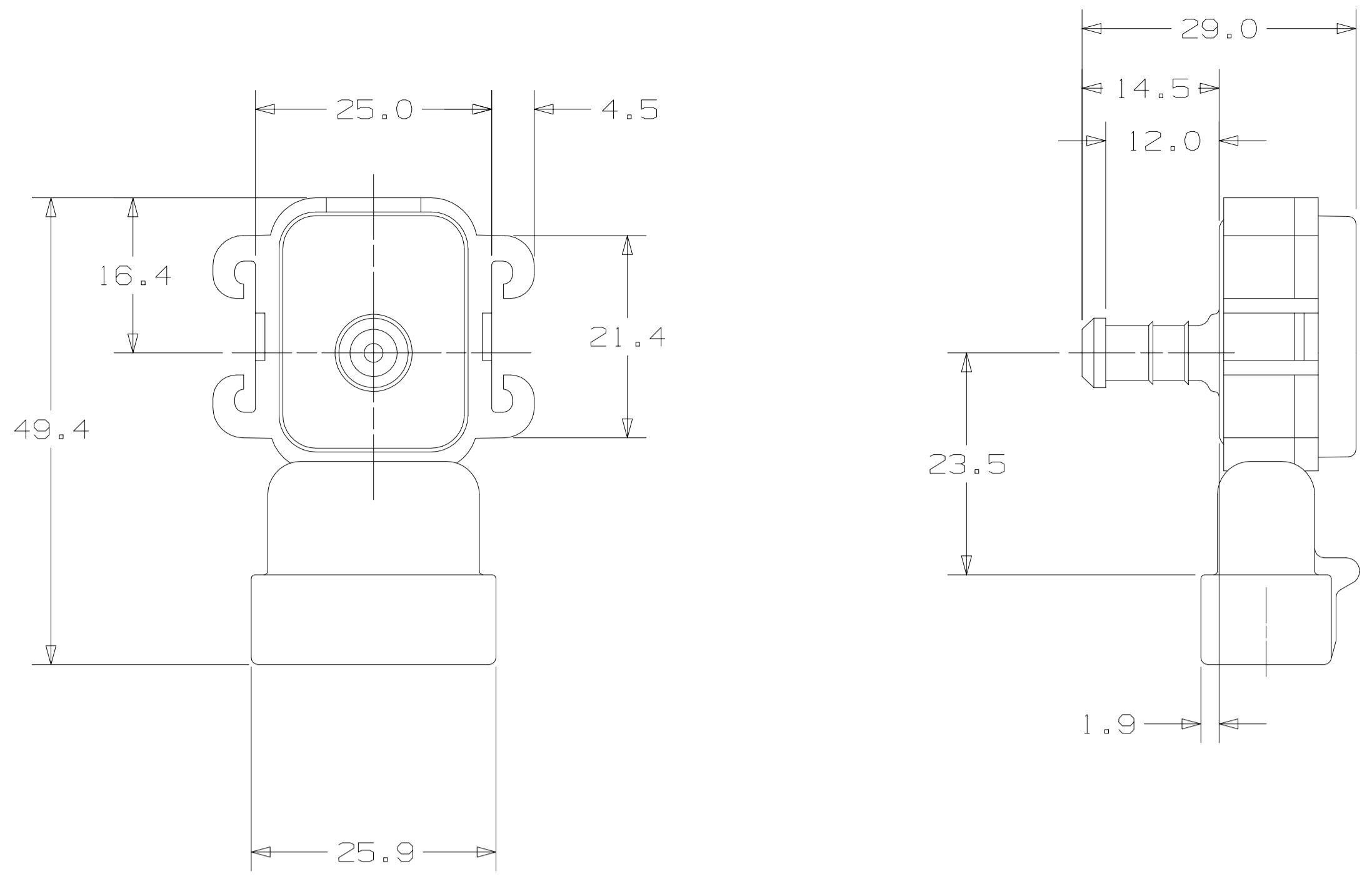
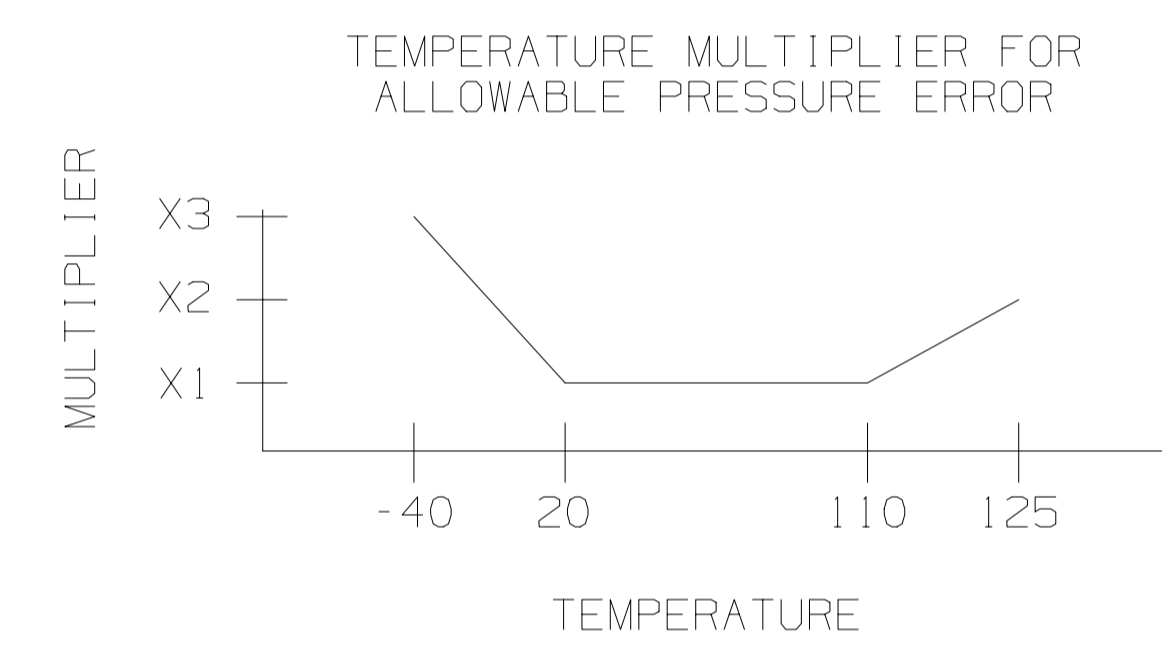


DATE	SYM	REVISION RECORD	AUTHORITY	CUST AUTHORITY	DR.	CK.	APVD
22MR01	A	RELEASED-PRODUCTION	154796	-	-	-	-
26FED2	B	EMI CAP CHANGE 0.022µF TO 0.1µF & NOTE 1 PER CNB9	155089	-	JEM	FF	GS



PRESSURE ERROR IN kPa

INPUT PRESSURE	ALLOWABLE ERROR
50	+/-9.0
70	+/-6.0
270	+/-6.0
333.3	+/-9.0



TEMPERATURE MULTIPLIER FOR ALLOWABLE PRESSURE ERROR

TEMPERATURE	MULTIPLIER
-40	3
20	1
110	1
125	2

- LABEL: LABEL MAY CONTAIN BUT NOT LIMITED TO INFORMATION SUCH AS PIN OUT, COUNTRY OF ORIGIN, DATE CODE, TRACEABILITY INFORMATION.
 - DATE CODE: FIRST DIGIT REPRESENTS THE YEAR AND LAST THREE DIGITS REPRESENT THE DAY OF THE YEAR.
- ELECTRICAL OUTPUT

$V_{OUT} = V_{REF} (0.003 * P - 0.1)$

$V_{out} = 5.0 \pm 0.1$ VOLTS

P = PRESSURE IN kPa
- RECOMMENDED MOUNTING PROCEDURE FOR THE PRESSURE SENSOR IS TO HAVE THE PORT POINTING DOWN WITHIN 30° OF VERTICAL. THE PRESSURE SENSOR SHOULD BE MOUNTED HIGHER THAN THE VACUUM SOURCE AND IT IS RECOMMENDED THAT THE VACUUM SOURCE BE UP STREAM OF THE EXHAUST GAS RECIRCULATION VALVE. CONNECTING TUBE NOT TO SAG BELOW HORIZONTAL. 250 MAXIMUM TUBE LENGTH.

SCALE 2/1 04

DELPHI
Automotive Systems

METRIC \leftarrow mm \rightarrow
UNLESS OTHERWISE SPECIFIED; ALL DIMENSIONS ARE IN MILLIMETERS, AND THE TOLERANCES ARE:
ONE PLACE DECIMALS ± 0.7
TWO PLACE DECIMALS ± 0.35
ANGLES ± 4°
DRAFT ANGLES = 4°
SHARP CORNERS = R 0.50

GD&T SEE ASME Y14.5M-94 FOR GD&T INTERPRETATION
PDM CHANGES ALLOWED ONLY BY PDM DOCUMENT PROCEDURES
UG DO NOT SCALE \oplus THIRD ANGLE PROJECTION

FIRST USED 12215049	DES JOHN E MILLER	22MR01
REFERENCE 3.3 BAR	APR R.R.LONGSTREET	22MR01
EXP MODEL -	APR N/A	
EXP NUM -	APR N/A	
	APR N/A	

RESTRICTED AND REPORTABLE CHEMICALS PER GM1000M

KEY PRODUCT CHARACTERISTICS	
SAFETY/COMPLIANCE	FIT/FUNCTION
TOTAL ON DRAWING	1
LAST NUMBER USED	1

MATERIAL SPEC	-
DRAWING NAME	OUTLINE-P/SNSR
PART NUMBER	12215049
SHT 1 OF 1	

DELPHI DELCO ELECTRONICS SYSTEMS
Division of DELPHI AUTOMOTIVE